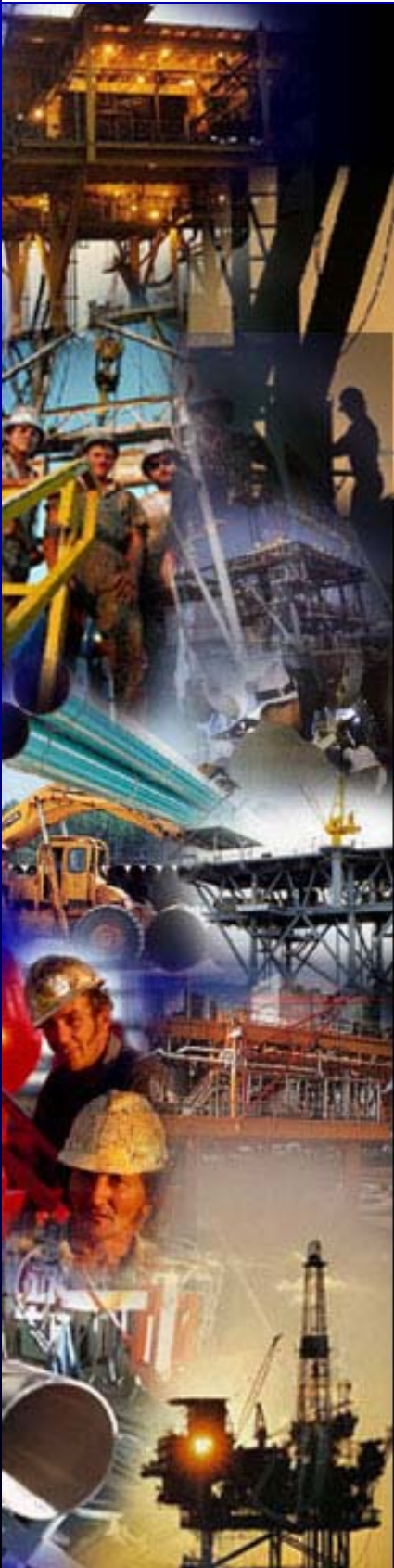




Iberia Industrial Development Foundation



Iberia Parish

Community Profile

Quick Reference Guide:

Introduction	1
Market Access	3-5
Incentives, Financing and Taxes	6-9
Workforce	10-11
Business Base	12
Utilities	13
Quality of Life	14-17
Economic Indicators	18-26

How to contact the IDF:

Iberia Industrial Development Foundation
101 Burke Street
New Iberia, LA 70560

Phone: (337) 367-0834

Fax: (337) 367-7421

Email: info@iberiabiz.org

Website: www.iberiabiz.org

www.iberiabiz.org

Iberia Parish

Community Profile

Louisiana Positives!

- A total of 148 teachers in Louisiana earned national certification, an advanced teaching credential, in 2010. The state has the 13th-highest number of newly certified teachers in the nation and 16th overall. This growth brings Louisiana's total to 1,681. There are about 8,600 of such teachers in the nation (The Advocate, December 2010).
- The MPA program at the University of Louisiana at Lafayette made The Princeton Review's "The Best 300 Schools" list (The Advocate, October 2010)
- For the third year in a row, *Southern Business and Development* named Louisiana "State of the Year."
- The U.S. Public Interest Research Group ranks LaTrac, the state government's website and online state spending database, as fourth in the nation, giving it a score of "A" for its transparency (The Advocate, March 2011).
- Louisiana had the second-largest increase among all states in the number of raw jobs created the last five years according to *American City Business*. (CABL, July 2011).

Welcome to Iberia Parish!



From Mike Tarantino
Iberia Industrial Development Foundation Executive Director:

If you're looking for the right place to do business Iberia Parish, Louisiana, and its communities are too hot to pass up!!! Iberia is THE place to live, work and do business. Whether you're checking out our area as part of a project bid or whether you're looking for the right place to expand or relocate Iberia's got it all!

We're located in the center of it all between Houston and New Orleans along the Louisiana Gulf Coast. We've got premium water, air, rail and road connections that connect you to both national and international markets and we're sure that you'll find our workforce and pro-business community spirit second to none.



From Errol Romero
Iberia Parish President

Welcome to Iberia Parish! We're proud of our work-ready community—home of a world class workforce and huge potential for your business! From a great quality of life...to a dynamic and diversified business community, Iberia has it all! The Iberia Parish Government stands ready to assist you in your endeavor and we're looking forward to your visit to our community soon.



From Roy Pontiff
Port of Iberia Executive Director:

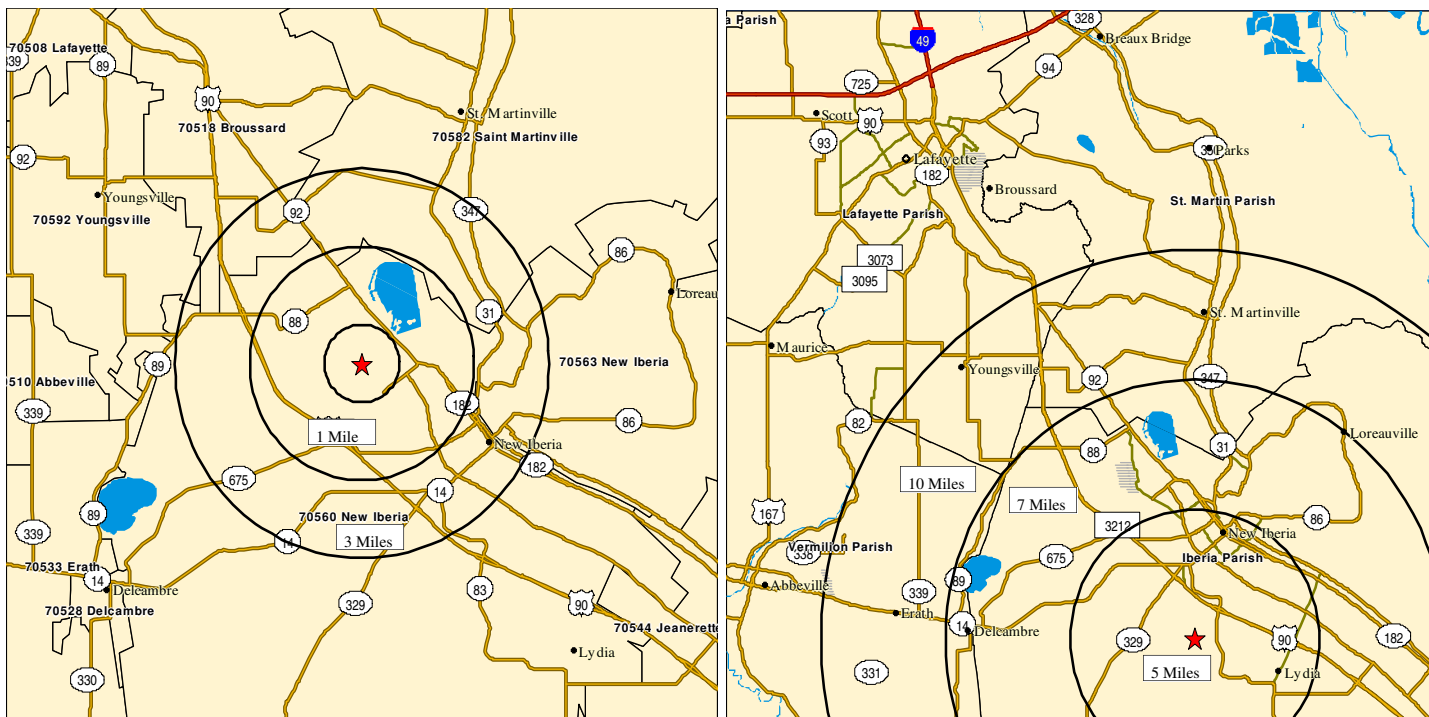
Cajun country is a great place to live, work and play, and the Port of Iberia is right in the heart of all the action! Our area has abundant natural resources and our people have a strong work ethic. The Port of Iberia is home to over one hundred companies involved in a diversity of industries. Our port has water, rail and four-lane access and a fully instrumented 8,000 foot runway general aviation airport is within three miles. We'd love to discuss with you the opportunity of bringing your business to the Port of Iberia.



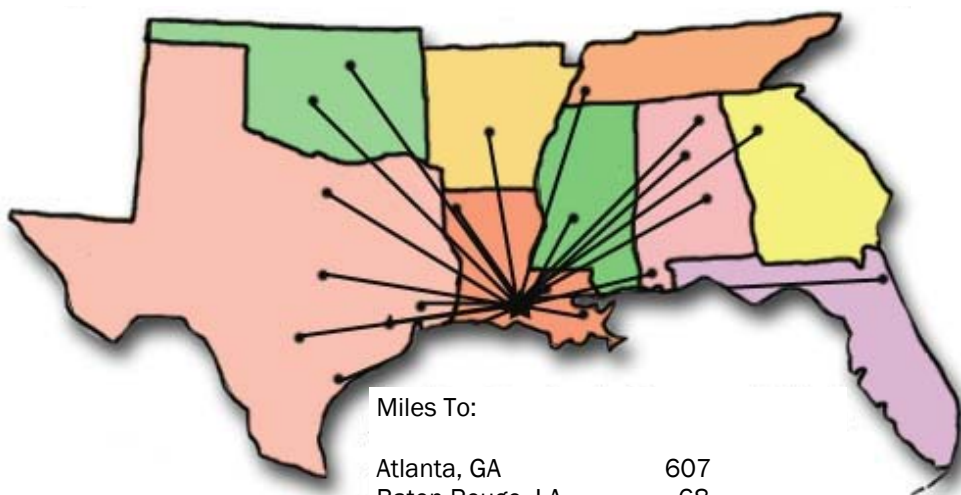
From Jason Devillier
Acadiana Regional Airport Director

Acadiana Regional Airport stands ready to meet the challenge of air-industrial development needs in Iberia Parish and all of Acadiana. We have over 1,000 acres of industrial land, in parcels from 2 to 200 acres; railroad on-site and extendable; industrial roadways and all utilities are available for immediate development in light, medium or heavy applications. Into that mix of infrastructure, add the all-weather capable airport including Acadiana's longest, strongest, lighted full ILS instrumented, controlled land runway and lighted seaway and you have the necessary ingredients for successful development or expansion of either a local, regional, national or international business.

Market Access



Motor Freight



Miles To:	
Atlanta, GA	607
Baton Rouge, LA	68
Biloxi, MS	216
Birmingham, AL	440
Dallas, TX	418
Houston, TX	240
Jackson, MS	252
Jacksonville, FL	678
Memphis, TN	465
Mobile, AL	268
New Orleans, LA	146
Oklahoma City, OK	637
San Antonio, TX	416



Motor Freight:

Iberia Parish is located approximately 16 miles from the intersection of I-10 and I-49. There are an abundant supply of freight carriers including FedEx, UPS, SAIA, Roadway, ABF Freight Systems, American Freightways, Dupre Transport, Yellow Freight Systems and many others.



Air Services

General Aviation Airport and Services



Acadiana Regional Airport:

- Total Airport complex over 2,325 acres with 125 acres of Industrial Park and a planned expansion to include another 200 acres.
- Over 50 industries, 1,750 employees are located and operating at the Acadiana Regional Airport.
- Featuring an 8,002 foot concrete runway and a 5000 foot water runway for amphibious aircraft.
- Direct rail link, serviced by Louisiana Delta Railroad.
- Intermodal - rail to truck off loading facility.
- 100,000 air operations per year.





Acadiana Regional Airport



Visit the Acadiana Regional Airport on the web at www.flyiberiaparish.com, or contact the Airport Director, Jason Devilier, at:

Acadiana Regional Airport
1404 Hangar Drive
New Iberia, LA 70560

Phone: (337) 365-7202

Fax: (337) 365-7203

Email:

jasondara@bellsouth.net

Passenger Air Services

The nearest commercial airport is the Lafayette Regional Airport. Air services are provided by Atlantic Southeast (Delta), Continental Express and Northwest Airlink. Atlantic Southeast has two (2) flights to Atlanta daily, while Continental Express flies to Houston eight (8) times daily. Northwest Airlink has three (3) daily flights to Memphis.

The nearest international airport is the New Orleans International Airport, approximately 120 miles from New Iberia.

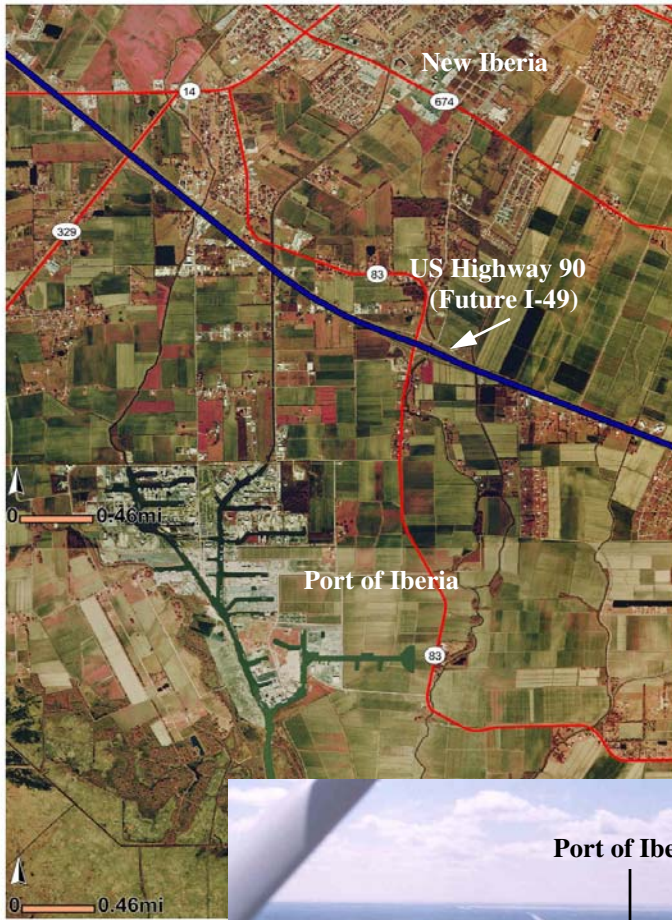
Railways

Railways that serve Iberia Parish:

- Burlington Northern and Santa Fe Railway Co.
- Louisiana & Delta Railroad, Inc. (L&D)
- Union Pacific
- Amtrak



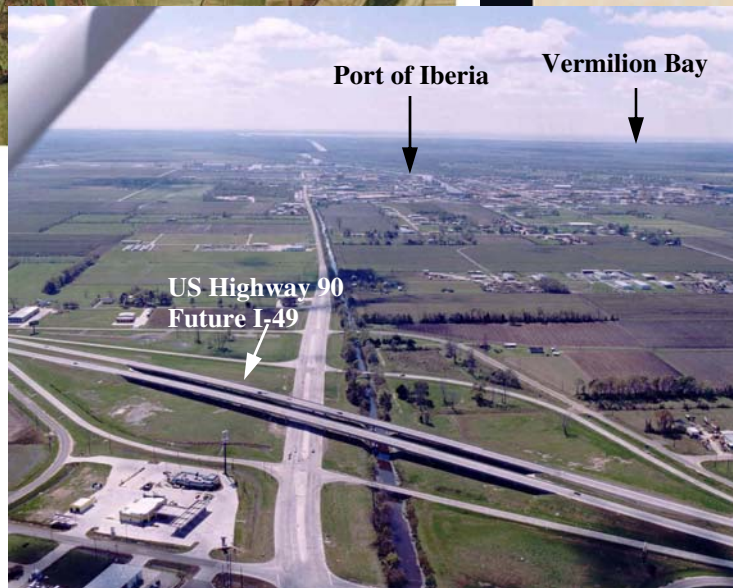
Waterways



THE PORT OF IBERIA
The Gulf Coast Cajun Connection

Port of Iberia Quick Facts

- Main Navigation Channel is 13 ft deep, bottom width is 125 ft. and surface width is 200 ft.
- Over 2,000 acres of land under development
- Over 4,000 acres of undeveloped land available at the Port or adjacent property
- The Port has 25,000 linear feet of bulkheads
- Public docking and stevedoring services available
- Over 100 industries are located and operating at the Port of Iberia



Visit the Port of Iberia on the web at www.portofiberia.com

or contact the
Roy Pontiff
Port Director
at:

Port of Iberia
P.O. Box 9986
New Iberia, LA 70562-9986

Phone: (337) 364-1065
Fax: (337) 364-3136
Email:
info@portofiberia.com

Other Regional Ports

- Port of Greater Baton Rouge—Located 50 miles West of Lafayette, Channel depth 45 ft. Foreign Trade Zone
- Port of Lake Charles—Located 70 miles West of New Iberia, Channel depth 40 ft. Foreign Trade Zone

Incentives, Financing & Taxes

Louisiana offers numerous business incentives, including tax abatements, enterprise zones and financing assistance. IDF can help you in determining which incentives are right for your business, and we can help you in completing the application process. For all Louisiana Economic Development assistance programs, **an Advance Notification form and the proper fees MUST BE SUBMITTED PRIOR TO BEGINNING CONSTRUCTION, INSTALLATION, HIRING OR EQUIPMENT PURCHASES.** The Advance Notification form and more detailed information regarding any of the incentives listed can be found at www.laemall.com, or by visiting the Louisiana Department of Economic Development's website at www.lded.state.la.us.



Tax Credits and Incentives

Corporate Jobs Tax Credit

- A one time tax credit ranging from \$100.00 to \$225 for each net new permanent job
- The credits may be used to satisfy state corporate income tax obligations
- The Program is offered to most industries, however it is not offered in conjunction with the Enterprise Zone program nor the Industrial Tax Exemption Program

Enterprise Zone

- An advance notification form is required
- Qualifying businesses are eligible for a one-time tax credit for \$2,500 for each net new permanent job created during the first five years of a project
- Workforce must increase by 10% within the first 12 months OR create 5 new jobs within the first 24 months of the project start date
- Tax credit may be used to satisfy state income tax or state franchise tax obligations
- Businesses are also eligible for a rebate of state sales taxes on non-consumable materials used to construct/expand the business and machinery/equipment purchased during the construction period; the machinery must be used exclusively on site, in that specific business operation
- The state sales tax rebate covers only the construction period

Freeport Law

- Permits most manufacturers to bring raw materials into the state without having to pay a tax on them until after they have been placed in the manufacturing process.
- Cargoes in transit are exempt from taxation as long as they are kept intact within their smallest original shipping container.
- Louisiana ports and distribution facilities are also eligible for Freeport Law exemptions.



Visit the Louisiana Department of Economic Development at:

louisianaeconomicdevelopment.com

P.O. Box 94185
Baton Rouge, LA 70804-9185

(225) 342-3000
800-450-8115



Air Logistics expanded its New Iberia facility with help from the incentives offered by the state.

Tax Credits and Incentives

Industrial Property Tax Exemption

- An advance notification form is required
- New and expanding manufacturing operations or expansions are eligible for exemption of property taxes on new construction or additions to existing buildings; the purchase of permanently fixed equipment and machinery is also included.
- A business can take advantage of this program for a period of 5 years; there is a provision for the granting of a second 5 year exemption.

Inventory Tax Program

- Businesses will receive state tax credits for local property taxes paid on inventories
- The credits can be used to satisfy state income and corporate franchise taxes

Quality Jobs Program

- An advanced notification form is required.
- Offers qualifying employers a credit that can be applied toward Louisiana corporation (and personal) income tax and corporate franchise tax liabilities.
- Also eligible for state sales/use tax rebate on materials purchased for new infrastructure
- The amount of the annually refundable credits based on a new benefit rate that can be up to 6% of the employers gross payroll (annual) for new jobs created.
- Employers with 50 or more employees must create a minimum of 5 new direct jobs and have a minimum of \$500,000 in gross annual payroll for new direct jobs.
- Employers with less than 50 employees must create 5 new direct jobs and have a minimum of \$250,000 in gross annual payroll for new direct jobs within 3 years of the effective date of the contract.

Deepwater Drilling Rig Repair, Renovation and Conversion Sales Tax Exemption

- Deepwater drilling rigs (for use outside the territorial limits of the state in Outer Continental Shelf waters), are exempt from State and local sales and use taxes during repair, renovation or conversion.
- Sales tax exemption applies to labor, sale of materials, services and supplies used during the period the rig is located at a Louisiana facility located in Iberia Parish for repair, renovation or conversion work.



Visit the Louisiana Department of
Economic Development at:

louisianaeconomicdevelopment.com

P.O. Box 94185
Baton Rouge, LA 70804-9185

(225) 342-3000
800-450-8115



Louisiana Specialty Products opened a new facility at the Acadiana Regional Airport with help from economic development incentives offered by the state of Louisiana.

Training Assistance

Incumbent Worker Training Program

- Designed to benefit Louisiana employers by assisting in the skill development of existing employees and providing funding for training
- Improvements are expected to result in the creation of new jobs, retention of jobs that might have been eliminated and an increase in wages for trained employees.
- Eligibility: a business should have operated in Louisiana and contributed to the state's Unemployment Insurance System for a minimum of 3 years.
- An employer or a consortium of employers with similar needs should have at least 15 employees to be trained.



Job Service

- Employment office maintained by the Louisiana Department of Labor
- Houses the largest state database of qualified job seekers; job listings that cannot be filled locally are fed into the database
- Employers may also use any of the statewide Job Service offices to conduct a prospective employee search.

Visit the Louisiana Department
of Labor :

www.laworks.net

Louisiana One Stop in New Iberia
124 E. Main Street
New Iberia, LA 70560

(337) 373-0010

Workforce Development and Training Program

- Used to develop and fund customized workforce training programs for a new or expanding business.

Eligibility: businesses planning to locate a facility in the state, businesses expanding their current operations within the state by adding a new area location and existing Louisiana businesses that have been in operation less than 3 years if all qualifications are met.

Workforce Investment Act (WIA)

- Can provide reimbursement to the employer of up to 75% of an employee's wages earned during the training period.
- Offers placement assistance to employers with job openings..



Taxes

Corporate Franchise Tax

- This state tax is levied annually at the rate of \$1.50 per \$1,000 on the first \$300,000 of capital stock, surplus, undivided profits and borrowed capital employed in Louisiana
- The rate is \$3.00 per \$1,000 after the first \$300,000.
- The minimum tax is \$10.00 per year; waiver of the corporate franchise tax is allowed under certain incentive programs.

Corporate Income Tax

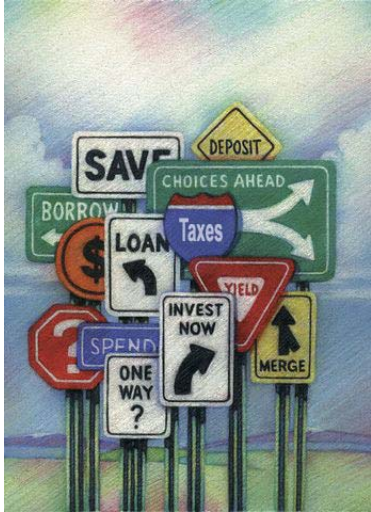
- Tax ranges from 4% to 8% of the new taxable income
- The effective rate of taxation is somewhat less because federal income taxes are deductible in computing new taxable income.

Property Tax

- No state property tax in Louisiana.
- Local millages vary depending on property location.
- Land is assessed at 10% of value, improvements at 15%.

Sales Tax

- Sales tax is levied on the retail sale of personal property, goods used or stored for use in Louisiana and on leases and rentals of tangible personal property and certain services
- Louisiana state sales tax is 4%
- City of New Iberia has a sales tax rate of 4.5%. Outside the city limits the sales tax rate is 3.25%.



Below are some local projects that benefited from state and local incentives



Armentor Jewelry



Get Wet Car Wash



Coming Soon!
Iberia's newest retail development.

Workforce



Availability and Cost of Labor

- The Combined Statistical Area that includes Iberia Parish (Acadia, Iberia, Lafayette, St. Landry, St. Martin and Vermilion Parishes) offers a large, skilled workforce.
- The chart below provides information illustrating how wages of Iberia Parish workers compares with those of other workers located in other areas of the region:

Occupation	New Iberia	Houston	Atlanta	Jackson	San Antonio
Accountant	\$36,523	\$46,286	\$44,387	\$40,579	\$41,539
Construction Worker	\$29,210	\$35,697	\$34,494	\$31,532	\$32,049
Carpenter	\$26,000	\$33,224	\$32,161	\$29,398	\$29,811
Electrical Engineer	\$57,195	\$69,725	\$67,258	\$62,070	\$63,981
Registered Nurse	\$43,180	\$52,721	\$50,647	\$46,387	\$47,606
Office Manager	\$30,851	\$46,417	\$44,606	\$40,779	\$41,748
Welder	\$28,660	\$34,568	\$33,429	\$30,558	\$31,028
Teacher-Primary	\$27,654	\$43,946	\$42,275	\$38,647	\$39,513
Teacher-Secondary	\$34,285	\$45,811	\$44,034	\$40,256	\$41,200
Sales Rep.	\$39,279	\$48,897	\$46,945	\$42,918	\$43,992

Education and Training Programs

Incumbent Worker Training Program

- Designed to benefit Louisiana employers by assisting in the skill development of existing employees and providing funding for this training.

Job Service

- Employment office maintained by the Louisiana Department of Labor
- Houses the largest state database of qualified job seekers; job listings that cannot be filled locally are fed into the database

Educational Programs

Acadiana Technical College—Teche Area Campus

- The Acadiana Technical College system delivers instructional programs which provide skilled employees for business and industry that contribute to the overall economic development and workforce needs of the state. The ATC provides individuals with quality and relevant learning opportunities consistent with identified student, business and industry needs within a life-long learning environment.
- Diploma courses offered include carpentry, communications and electronics, electrician, industrial electronics technology, welding, office systems technologies and many others.

South Louisiana Community College—New Iberia Campus

- SLCC offers associate degrees in a variety of courses including: criminal justice, early childhood education, emergency health science, general business, industrial technology, general studies (in 5 different concentration areas), and liberal arts.
- General courses offered encompass a wide diversity of topics including accounting, communication, economics, finance, microcomputer information systems, political science and many others.

The University of Louisiana at Lafayette

- Second largest university in Louisiana with an enrollment of over 15,000 students
- Regional and national recognition for excellence in areas such as Computer Science and Environmental Biology.
- Marine Survival Training Center, Primate Center and Center for Advanced Computer Studies.

Workforce Development and Training Program

- Used to develop and fund customized workforce training programs for a new or expanding business.
- Eligibility: businesses planning to locate a facility in the state, businesses expanding their current operation within the state by adding a new area location and existing Louisiana businesses that have been in operation less than 3 years if all qualifications are met.

Workforce Investment Act (WIA)

- Can provide reimbursement to the employer of up to 75% of an employee's wages earned during the training period.
- Offers placement assistance to employers with job openings.



Acadiana Technical College
Teche Area Campus
P.O. Box 11057
609 Ember Drive
New Iberia, LA 70562-1057

Phone: (337) 373-0011
Fax: (337) 373-0039
WEB:
www.acadiana.edu



South LA Community College
New Iberia Campus
908 Ember Drive
New Iberia, LA 70560

Phone: (337) 373-0185
Fax: (337) 373-0187
WEB:
www.slcc.cc.la.us



University of Louisiana at
Lafayette
104 University Circle
Lafayette, LA 70504

Phone: (337) 482-1000
WEB:
www.uill.edu

Business Base

Businesses in Iberia Parish

- The Times of Acadiana, a local newspaper, compiles a listing of the top 100 privately held businesses in Acadiana by estimated gross revenues. Below is a listing of Iberia Parish businesses.



2003 Revenue Range	Company Name	Industry
\$150 Million and above		
	M.A. Patout & Sons Ltd. Inc.	Manufacturing
	McIlhenny Food Co., Inc.	Manufacturing
\$75 to \$125 Million		
	Dynamic Industries, Inc.	Oil & Gas
\$50 to \$75 Million		
	The Bayou Companies, LLC	Oil & Gas
	J.P. Thibodeaux	Automotive Sales
	Musson-Patout Automotive Grp.	Automotive Sales
\$25 to \$50 Million		
	Cajun Sugar Cooperative, Inc.	Manufacturing
	Food-n-Fun, Inc.	Retail Trade
	Land Coast Insulation, Inc.	Service
\$10 to \$25 Million		
	Marine Industrial Fabrication, Inc.	Manufacturing
	Sam Broussard Group	Transportation
	Simoneaud Grocery & Market	Retail Trade
	Streva Distributing Co.	Wholesale Trade
	Voorhies Supply, Inc.	Retail Trade



Utilities

Electricity

- Providers in Iberia Parish include:
 - Cleco
 - Entergy
 - SLEMCO



Natural Gas

- Providers in Iberia Parish include:
 - Centerpoint Energy
 - Atmos Energy Louisiana



Solid Waste Disposal

- Providers in Iberia Parish include:
 - Waste Management, Inc.
 - Allied Waste
 - Gordon's Disposal



Telecommunications

- Providers of telecommunication and broadband services include:
 - AT&T Mobility
 - Cox Cable TV
 - Eatel
 - Network USA
 - AT&T
 - MCI Worldcomm
 - Sprint
 - Suddenlink

Water and Wastewater

- Iberia Parish is serviced by Sewer District Number 1. The City of New Iberia owns and operates its own wastewater treatment facility.
- Water service is provided by LAWCO.

Quality of Life

Our Communities

- New Iberia is located in the middle of a unique cultural region known as Acadiana. The name is derived from the French-Canadian Acadians, who were exiled from their homeland of Nova Scotia in the late 1700's. Iberia Parish also has a rich Spanish heritage, dating from 1779, when a group of about 500 settlers moved from Spain to Louisiana. They made their home along the banks of the Bayou Teche, and founded the city of New Iberia. Five communities are located within the boundaries of Iberia Parish:

- City of New Iberia

New Iberia, the seat of Iberia Parish, lies on the banks of Bayou Teche. New Iberia was incorporated in 1836. It is known as the "Queen City of the Teche". A visit to New Iberia rewards you with history and culture, and a feast for the senses, unlike anything you've experienced before!

- City of Jeanerette

Jeanerette, known as "Sugar City" derived its name from John W. Jeanerette, a Carolina gentleman who came to the Teche country in 1830. He purchased Pine Grove Plantation, known as Beau Pre, located north of present day Jeanerette. Sugar cane became a key factor in the community's economic growth for the past 200 years. Abundant sugar cane farmland and a sugar mill for processing the crop form the backbone of Jeanerette's local economy. Agricultural machinery manufacturing, fish farming, livestock and oil and gas related industries also call Jeanerette home.

- Town of Delcambre

Delcambre is a small seaport, which harvests an abundance of seafood from the Gulf of Mexico. It is the home of the annual Shrimp Festival. Rich farms nearby, cattle herds and a growing community help make Delcambre one of the most promising of Louisiana towns along the Gulf Coast

- Village of Loreauville

Loreauville was first known as Picotville. In the 1840's it was renamed for Ozaire Loreau. Loreauville was incorporated in 1909, with a population of 291 people. The area has grown much since then, with the area that lines the Bayou Teche becoming home to several ship building firms that build boats from small pleasure crafts to large crewboats used in the support of the oil and gas industry.

- Community of Lydia

In 1869 Hypolite Patout, Jr. purchased 7200 acres for growing sugar cane, raising cattle and lumber production. He named his plantation for his eldest daughter, Lydia. The community that grew up around his plantation adopted the name Lydia. Lydia is the gateway to Cypremort Point, Vermilion Bay and the Gulf of Mexico.



City of New Iberia
Hilda Curry, Mayor

457 East Main Street
New Iberia, LA 70560
(337) 369-2300

www.cityofnewiberia.com



City of Jeanerette
Tim DeClouet, Mayor

P.O. Box 209
Jeanerette, LA 70544
(337) 276-4164

www.jeanerette.com



Village of Loreauville
Albert Broussard, Mayor

P.O. Box 336
Loreauville, LA 70552
(337) 229-8306

www.loreauville.us

Quality of Life

Arts, Entertainment and Leisure

- There's always something interesting, fun or exciting going on in Iberia Parish. We love sharing our sense of community with our friends and neighbors, so local fairs and festivals abound. Our close proximity to the Gulf of Mexico makes saltwater fishing a popular pastime, and freshwater sport opportunities can be found in abundance due to our numerous bayous, lakes and of course, the Atchafalaya Basin.
 - Annual Events and Festivals
 - Mardi Gras Parades (February/March), Cajun Fun Fest (May), Sugar Cane Festival (September), World Championship Gumbo Cook-off (October), Big Eight Trail Ride (May), Bunk Johnson Festival (May), Delcambre Shrimp Festival (August), Lydia Cajun Food Festival (September), Jambalaya Fete (October), Cajun Hot Sauce Festival (March/April)
 - Monthly/Quarterly Events
 - Downtown New Iberia Art Walk, The Farmer's Market, "Alive After Five" live music in Bouligny Plaza, IPAL musical or theatrical productions, SugArena livestock events,
 - Miscellaneous Events
 - Saltwater fishing rodeos, freshwater fishing tournament, special events at the Acadiana Regional Airport, motorcycle rallies, Music in the Park, Civil War Encampments, numerous parades and commemorative services

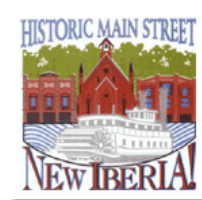
Area Attractions

- Avery Island
 - Avery Island is the home of world-famous TABASCO brand pepper sauce. Tour the TABASCO factory, shop in their country store, or visit the beautiful Jungle Gardens located on Avery Island.
- Rip Van Winkle Gardens
 - Located on beautiful Jefferson Island, visit the historic home of the actor Joseph Jefferson, best know for his portrayal of the character of Rip Van Winkle. Built in 1870 as a retreat for Jefferson from his gruling acting scheule, the gardens and home provide a peaceful respite from the hustle and bustle of modern-day life.
- Shadows on the Teche
 - The only National Trust historic home and garden in Louisaina, this elegantly resotred 1834 sugar plantatoin home on Bayou Teche is one of the most famous antebellum homes in the South.
- KONRIKO Company Store/ Conrad Rice Mill
 - Visit the oldest operating rice mill in the United Staes. Tour the mill, and visit their company store that features KONRIKO products as well as a large selection of locally produced foods and arts and crafts



Visit the Iberia Parish Tourist Commission's website to learn more about planning your visit to Iberia Parish:

www.iberiatravel.com



Quality of Life

Climate

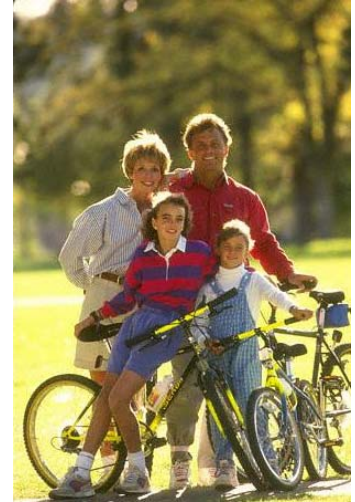
- Subtropical climate with an average rainfall of 60 inches
- Temperatures range from an average of 53 degrees In January to 81 degrees in July
- Average of 214 days of sunshine per year
- Snowfall is practically an historic event!

Education

- The Iberia Parish Public School System operates 32 schools with a total attendance of 14,142 students in grades PK-12. There are 7 private schools located in Iberia Parish
- Staffing Ratios for Iberia Parish Public Schools:

Staffing Ratios	Total Number	Students per Staff member	State Average
Teachers	1016	13.9	15
Instructional Aids	190	72	71
Librarians	29	491	680
Administrators			
District Level	7	2032	3626
School Level	45	323	287

(Source: National Center for Educational Statistics 2006)



Health Care

- There are two hospitals located in Iberia Parish:
 - Dauterive Hospital

Dauterive is a progressive 103-bed acute care facility located at 600 N. Lewis Street. Comprehensive services include The Rehabilitation Center, state-of-the-art cath lab and cardiovascular center, The BirthPlace obstetrical services emergency department, surgical services Pathways psychiatric unit and outpatient services.
 - Iberia Medical Center

With 130 beds and a staff of more than 500 health care professionals and over 140 physicians, Iberia Medical Center has grown to become a comprehensive health care provider that offers high quality care for almost any health need.
- Other Medical Services

There are numerous clinics, nursing homes and a soon-to-be completed rehabilitation hospital to serve the medical needs of Iberia Parish residents. Acadian Ambulance provides emergency medical and transportation services to Iberia Parish.

Dauterive Hospital



Now Under Construction:
Iberia's newest rehabilitation hospital

Quality of Life

Hotels, Motels, Bed 7 Breakfasts

- 10 hotels and motels are located in Iberia Parish, including Best Western, Holiday Inn Express, Comfort Suites and Days Inn.
- There are four campgrounds and 8 bed & breakfasts in Iberia Parish.
- The Iberia Parish Tourist Commission can provide more detailed information on the facilities available. Find them on the web at www.iberiatravel.com.

Media

- There is one daily newspaper that is based in Iberia Parish– The Daily Iberian. One weekly paper is published–The Jeanerette Enterprise. One monthly free publication is published– Acadiana Lifestyle.
- Two local outdoor billboard companies– Great Outdoor Advertising and Superior Outdoor.
- Regional papers that cover the area daily are The Advertiser (Lafayette) , and The Advocate (Baton Rouge).
- One local AM radio station (KANE 1240) is located in New Iberia.
- Regionally there are four television stations (Lafayette), 14 local FM radio stations and 5 local AM stations.

Recreation

- There is abundant recreation activities in Iberia Parish. The city and parish both operate numerous public park facilities that include tennis courts, swimming pools, basketball courts, walking tracks and softball fields. A skateboard facility is located in New Iberia's City Park. A bowling alley , health clubs and movie theatres can also be found.
- If the outdoors is more your style, this area has every sort of outdoor recreation imaginable. Golfing, fishing, hunting, water-skiing, boating, off-road motorcycling and ATV trails and camping facilities can be found in abundance.

Coming Soon: The PepperPlex multi-sport recreational complex



www.kane1240.com



www.iberianet.com



Special GO Zone Tax Incentives

GULF OPPORTUNITY ZONE TAX INCENTIVES

Creates a "Gulf Opportunity (GO) Zone" (the "Zone") comprised of the counties and parishes in Louisiana, Mississippi and Alabama that were designated as warranting individual or public and individual assistance by reason of Hurricane Katrina. The bill creates tax incentives to help revitalize and rebuild communities in the Zone.



Provides 50-percent bonus depreciation to help businesses rebuild in the Zone.

Permits businesses to claim an *additional* first-year depreciation deduction equal to 50 percent of the cost of new property investments made in the Zone. The additional deduction applies to purchased computer software, leasehold improvements, certain commercial and residential real estate expenditures and equipment. All depreciation deductions (including bonus depreciation) would be exempt from the AMT. The provision applies to property placed in service through December 31, 2007 (December 31, 2008 for real property). Also authorizes the Secretary of the Treasury to grant taxpayers affected by Hurricane Katrina, Hurricane Rita or Hurricane Wilma an extension of time up to one year to place assets in service in the Zone in order to qualify for the bonus depreciation provided by the *Jobs and Growth Tax Relief Reconciliation Act of 2003*.



www.kane1240.com

Creates additional tax-exempt bond authority to help rebuild devastated infrastructure in the GO Zone.

Provides Louisiana, Mississippi and Alabama the authority to issue a special class of private activity bonds, called GO Zone Bonds, outside of the state volume caps. Bond authority is approximately \$7.9 billion for Louisiana, \$4.8 billion for Mississippi and \$2.1 billion for Alabama. These amounts are based on each State's population in the Zone, according to 2004 U.S. Census estimates.



www.iberianet.com

GO Zone Bonds can be issued by States and municipalities. Bond proceeds can be used to pay for acquisition, construction, and renovation of nonresidential real property (including fixed improvements associated with such property), qualified low-income residential rental housing, single-family residential housing, and public utility property (e.g., gas, water, electric and telecommunication lines) located in the Zone. The GO Zone bonding authority will not be extended to the following types of businesses or investments: private or commercial golf courses, country clubs, massage parlors, hot tub facilities, suntan facilities, racetracks or other gambling facilities and liquor stores.

